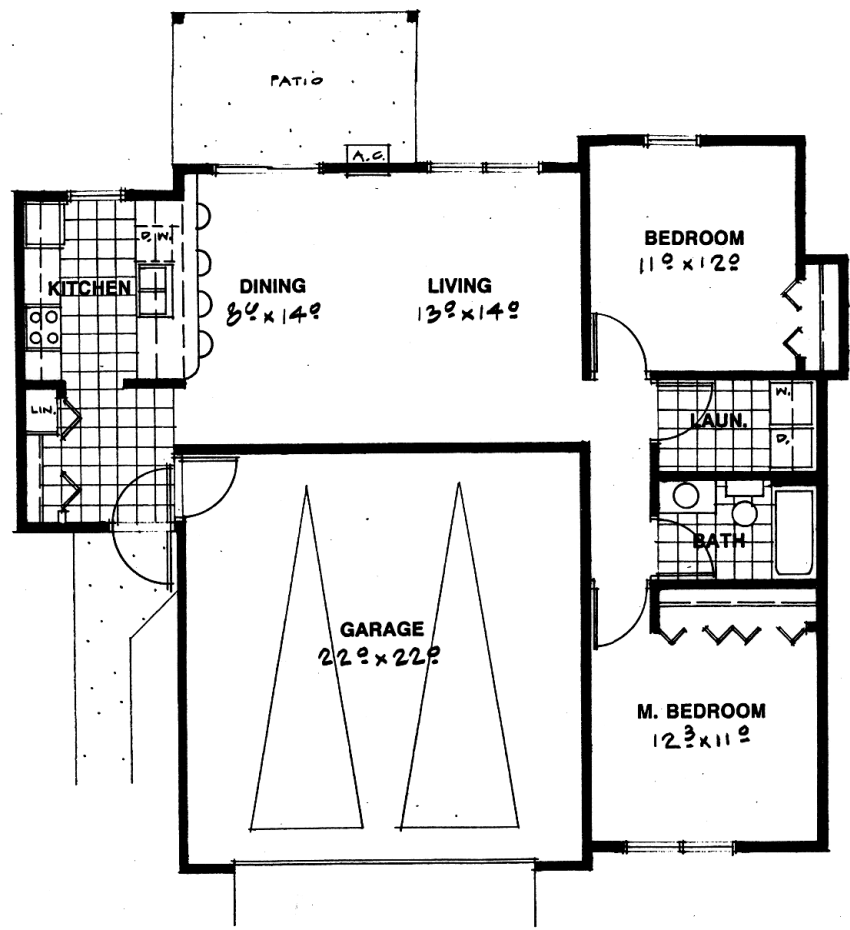
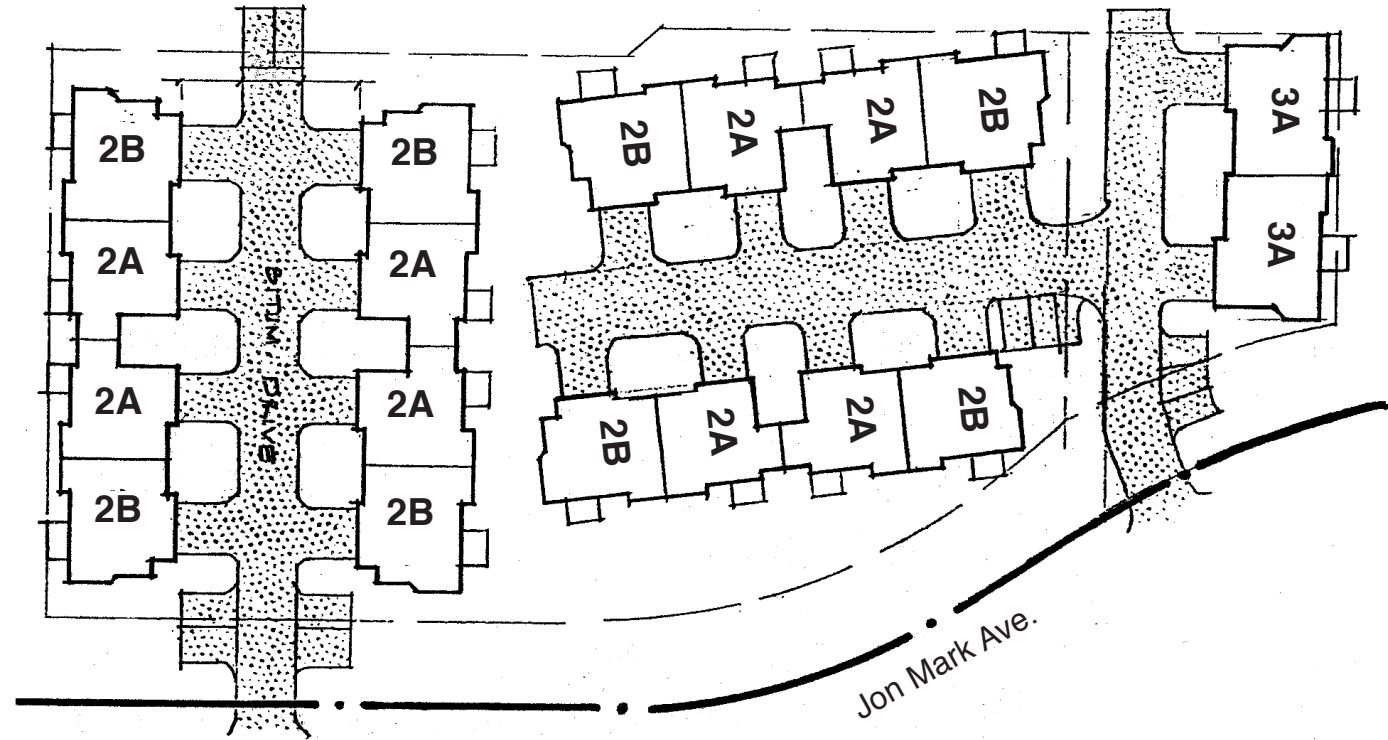
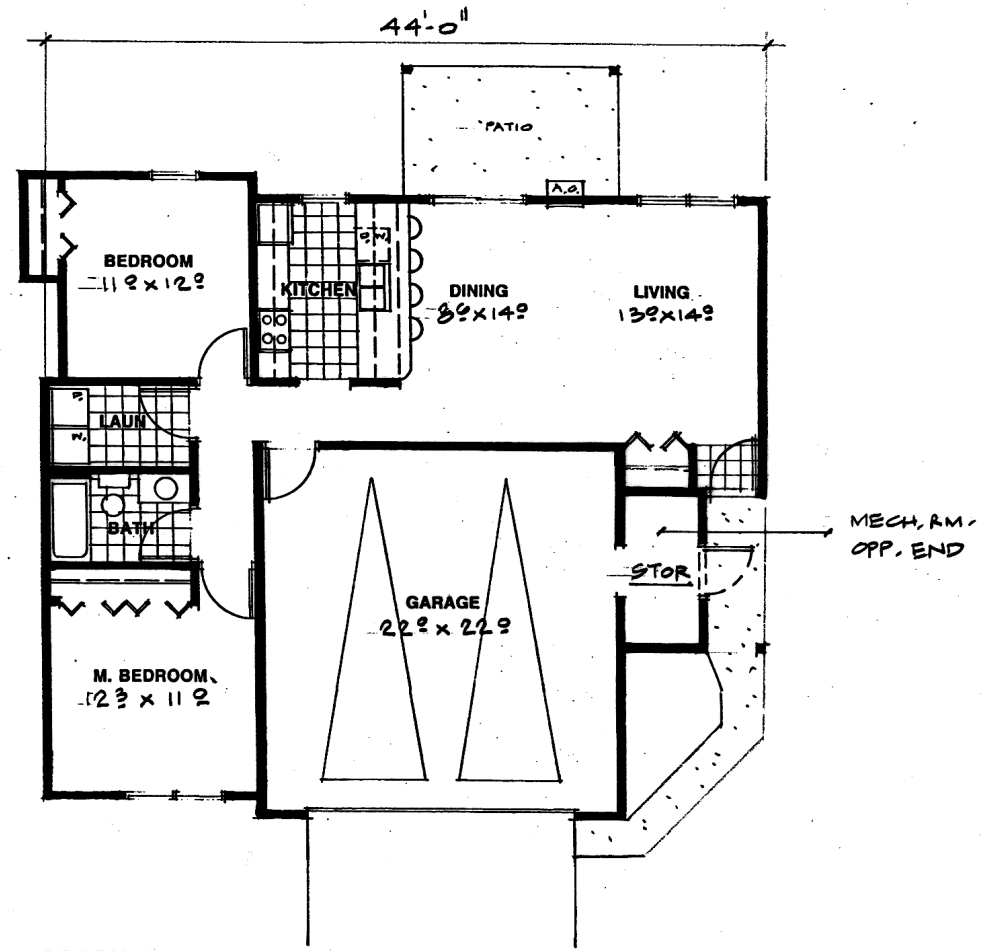


# Country View Townhomes

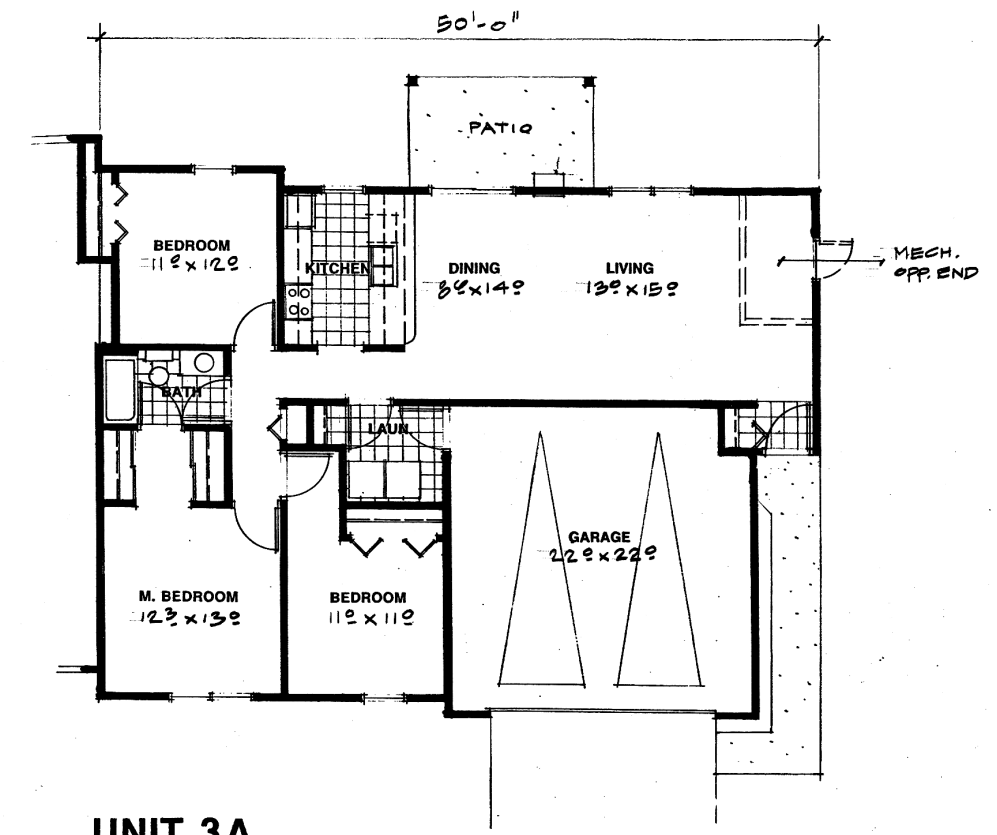
**Site Plan**  
**3 Floor Plans Available**



**UNIT 2A**  
964 SF



**UNIT 2B**  
982 SF



**UNIT 3A**  
1,313 SF

---

**Features of:**

# Country View Townhomes

---

## **New York Mills, Minnesota**

- Attached 2 car garage with opener
- Individually controlled hot water heat included in rent
- Air conditioner provided
- Cable ready
- Individual laundry hook-ups in each unit
- Modern bath
- Spacious European style kitchens
- Electric range
- Frost-free refrigerator
- Built-in microwave
- Quality dishwasher
- Garbage disposal
- Ample guest parking
- Quality landscaping & lawn sprinkler
- Complete grounds maintenance
- Trash & snow removal
- On-site management
- Quiet neighborhood setting
- Park-like atmosphere

# Country View Townhomes

*"Residential Living  
in a Peaceful Neighborhood Setting"*

400 John Mark Ave.  
New York Mills, MN 56567