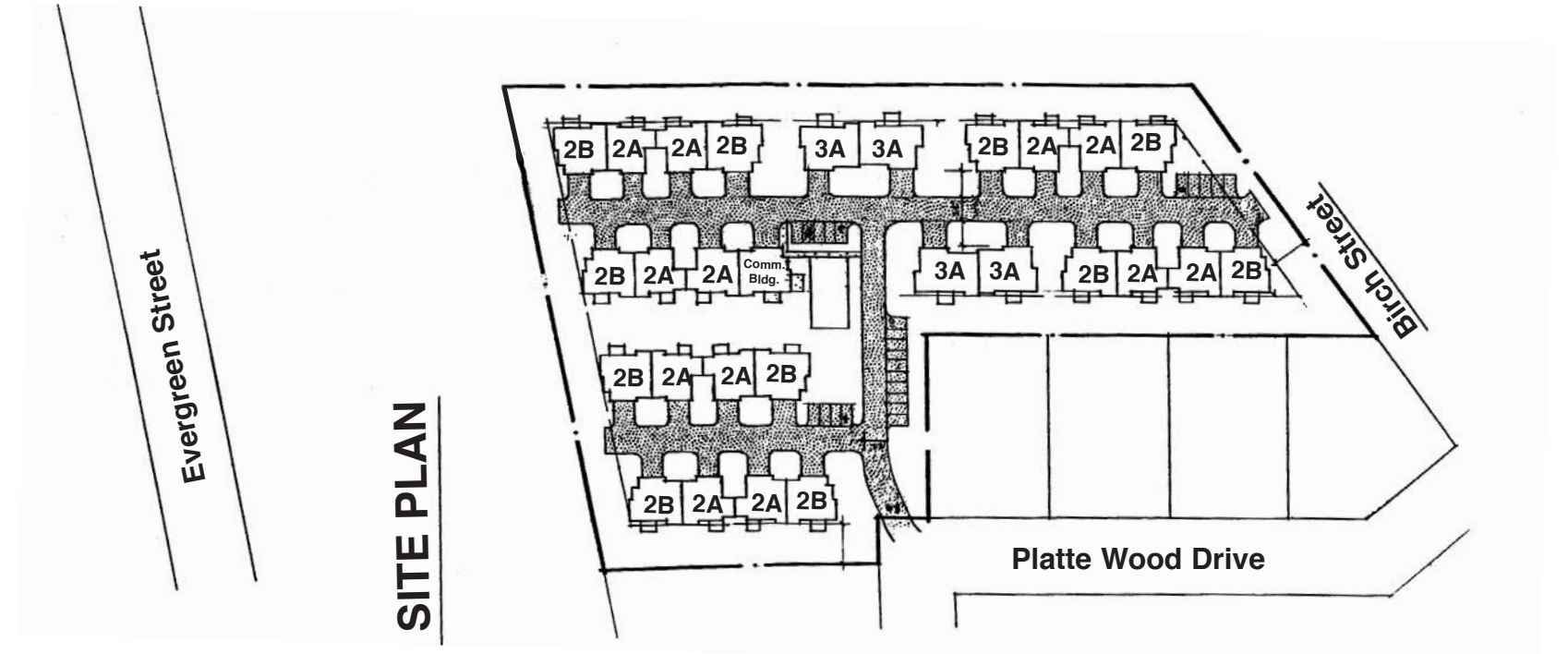


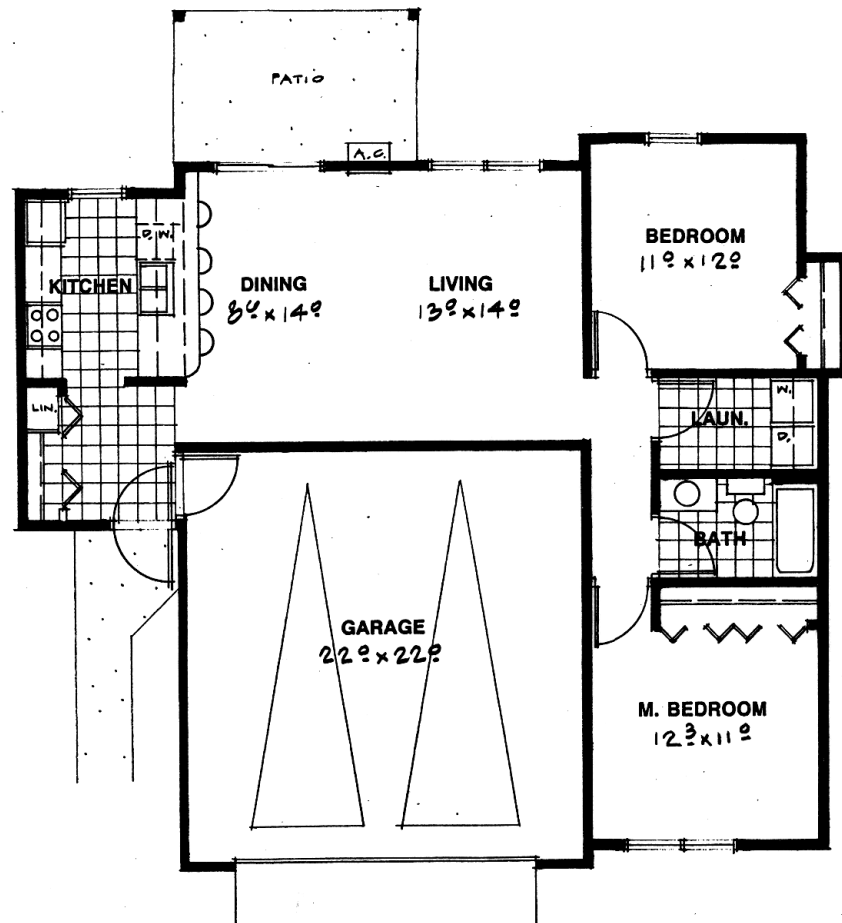
# Platte Wood Townhomes

## Site Plan

3 Floor Plans Available

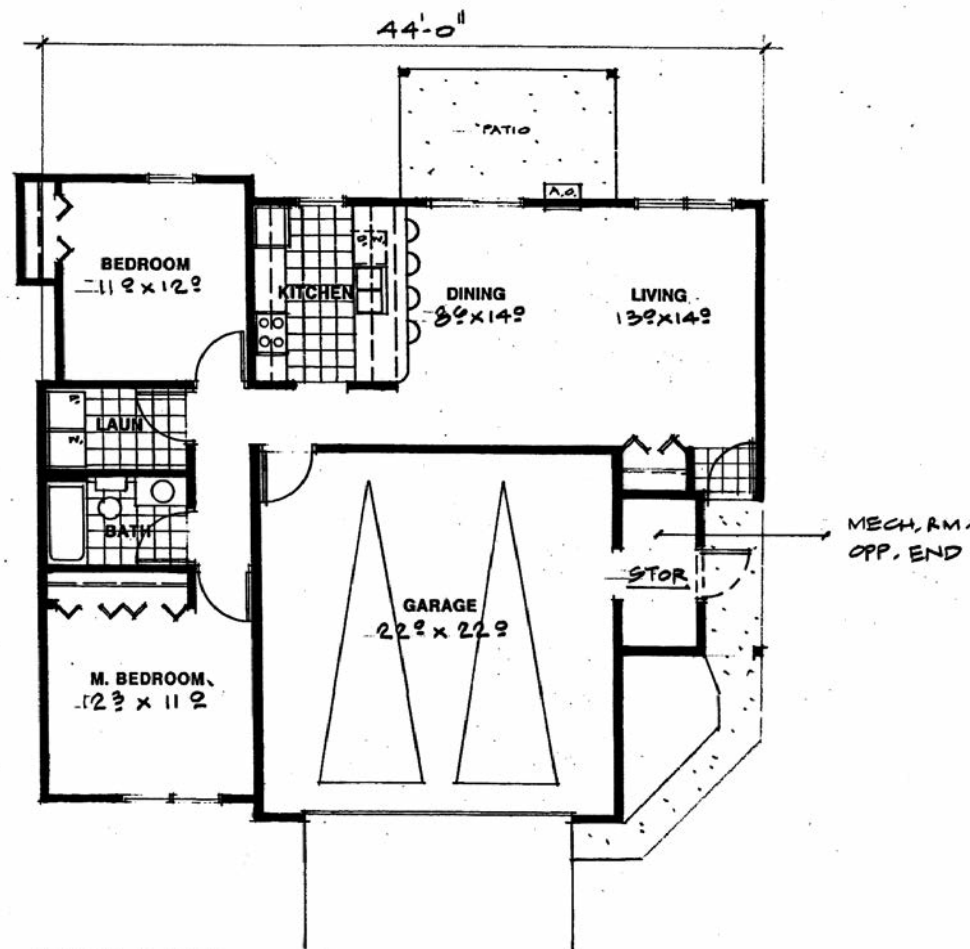


SITE PLAN



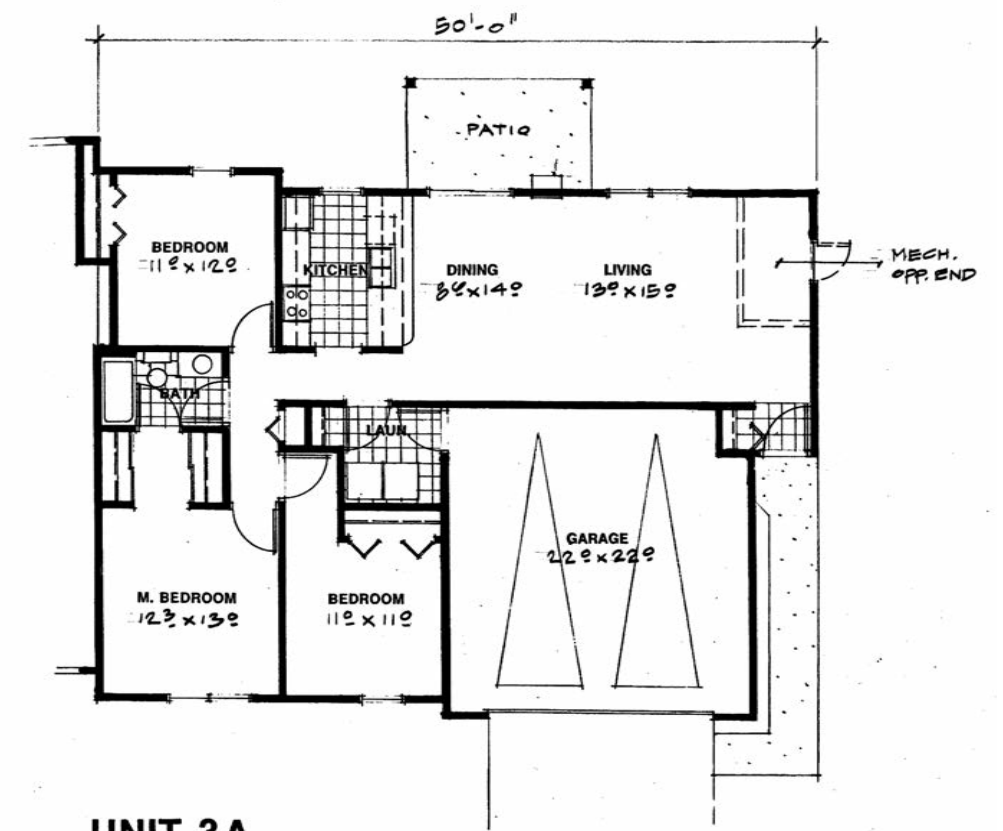
**UNIT 2A**

964 SF



**UNIT 2B**

982 SF



**UNIT 3A**

1,313 SF

---

Features of:

# Platte Wood Townhomes

---

## Royalton, Minnesota

- Attached 2 car garage with opener
- Individually controlled hot water heat included in rent
- Air conditioner provided
- Cable ready
- Individual laundry hook-ups in each unit
- Modern bath
- Spacious kitchens
- Electric range
- Frost-free refrigerator
- Built-in microwave
- Quality dishwasher
- Garbage disposal
- Ample guest parking
- Quality landscaping & lawn sprinkler
- Complete grounds maintenance
- Trash & snow removal
- On-site management
- Quiet neighborhood setting
- Park-like atmosphere

# Platt Wood Townhomes

*"Residential Living  
in a Peaceful Neighborhood Setting"*

335 Platte Wood Dr..  
Royalton, MN 56352