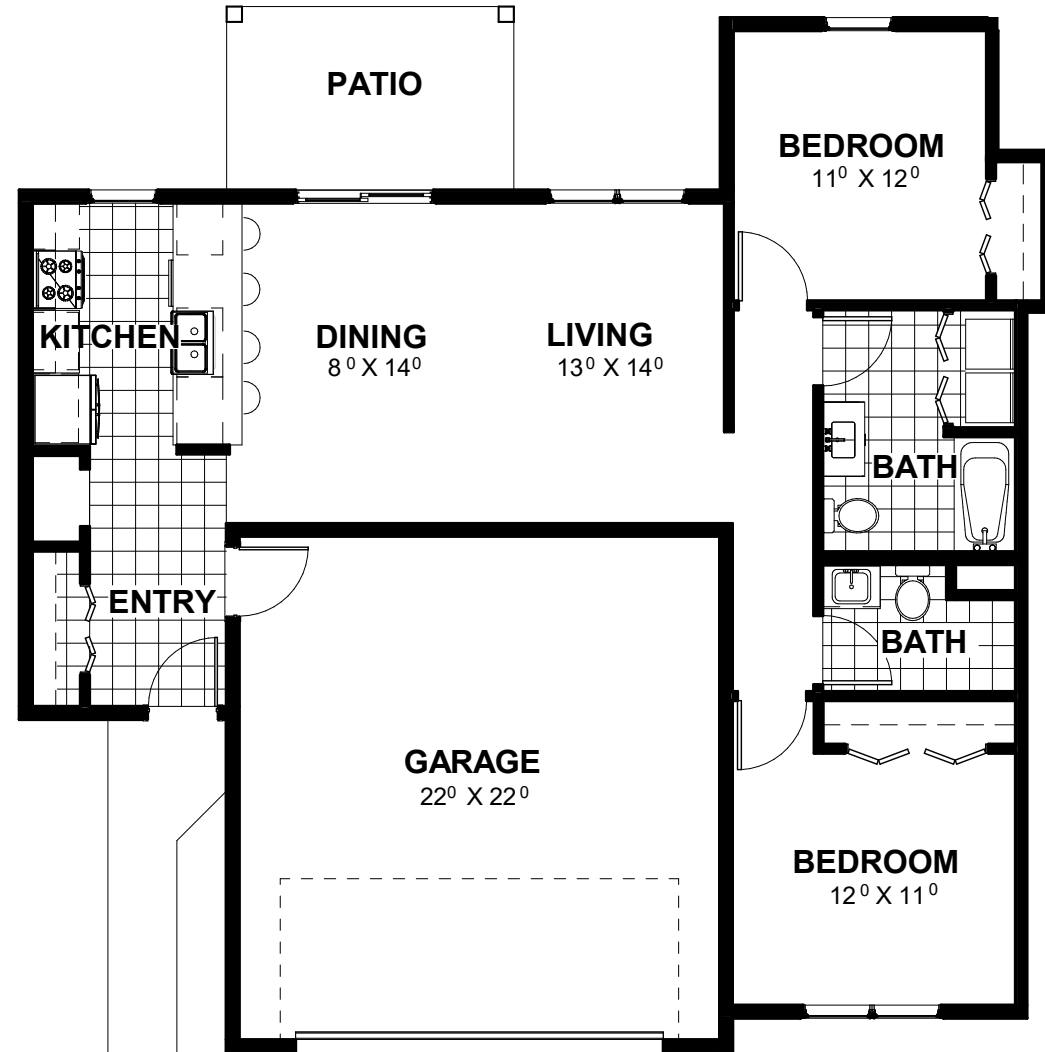
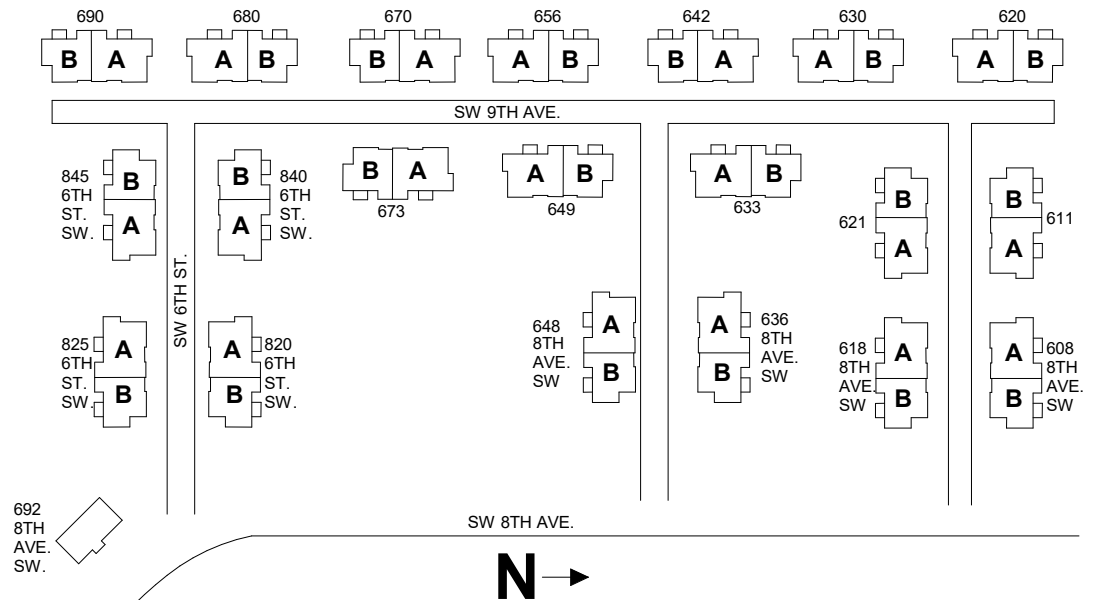


ALESHIRE PARK TOWNHOMES

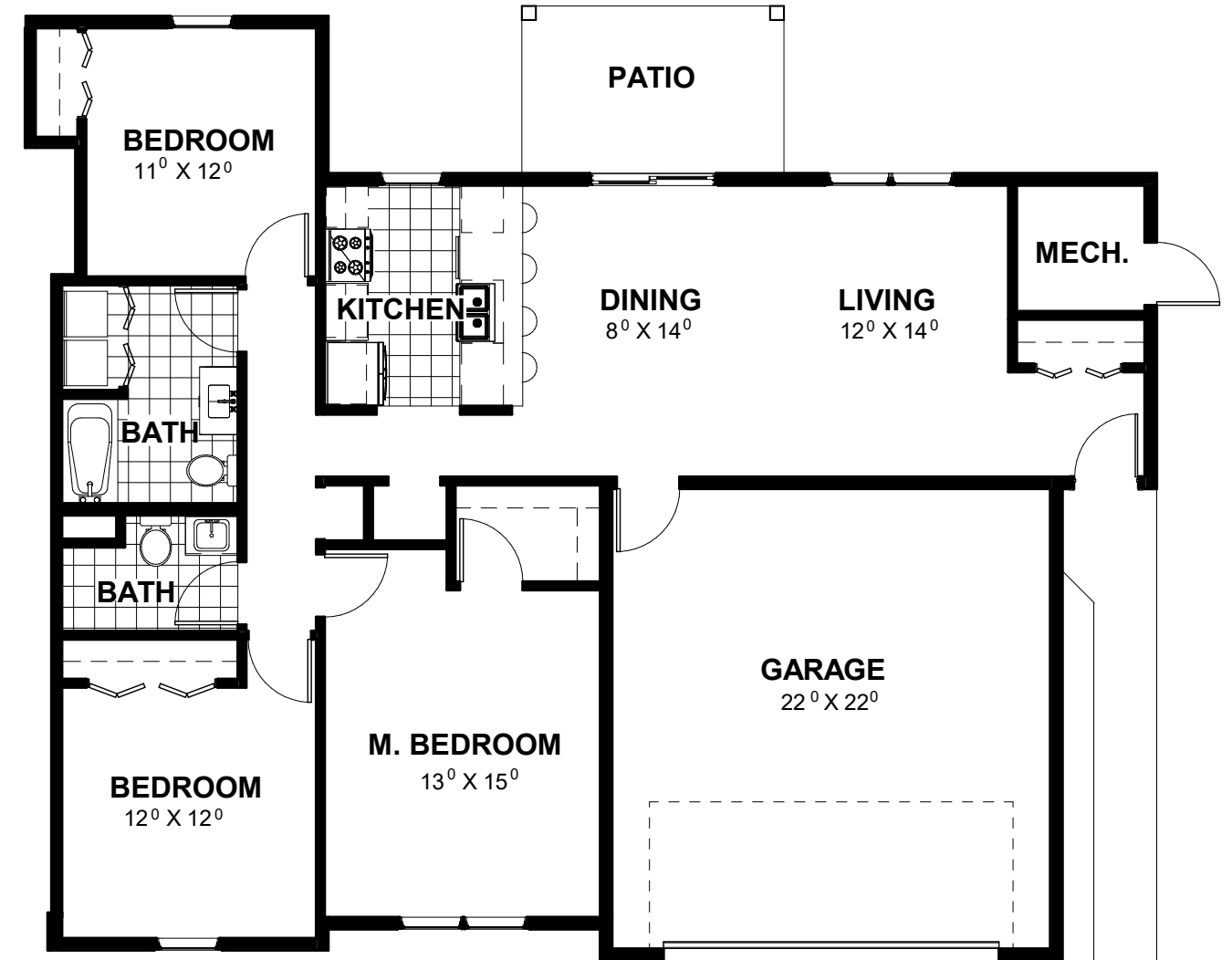
SINGLE LEVEL 2 & 3 BEDROOM UNITS WITH
LAUNDRY & TWO CAR GARAGE

FOR RENTAL UNIT PLEASE CALL - 320-632-5918

TWO FLOOR PLANS AVAILABLE



UNIT 2B - 2 BEDROOM
1,585 SF



UNIT 3A - 3 BEDROOM
1,895 SF

Features of Aleshire Park Townhomes

Perham, MN 56573

- **Attached 2 car garage with opener**
- **Individually controlled hot water heat included in rent**
- **Air conditioned-Thru the Wall Unit Centrally located in Living Room**
- **Individual laundry hook-ups in each unit**
- **Two bathrooms (one with tub, one step-in shower)**
- **Spacious kitchens**
- **Over the range microwave**
- **Dishwasher**
- **Community Room**
- **Ample guest parking**
- **Quality landscaping & lawn sprinkler**
- **Complete grounds maintenance**
- **Trash & snow removal**
- **On-site management**
- **Quiet neighborhood setting**
- **Park-like atmosphere**